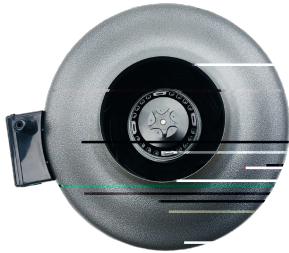




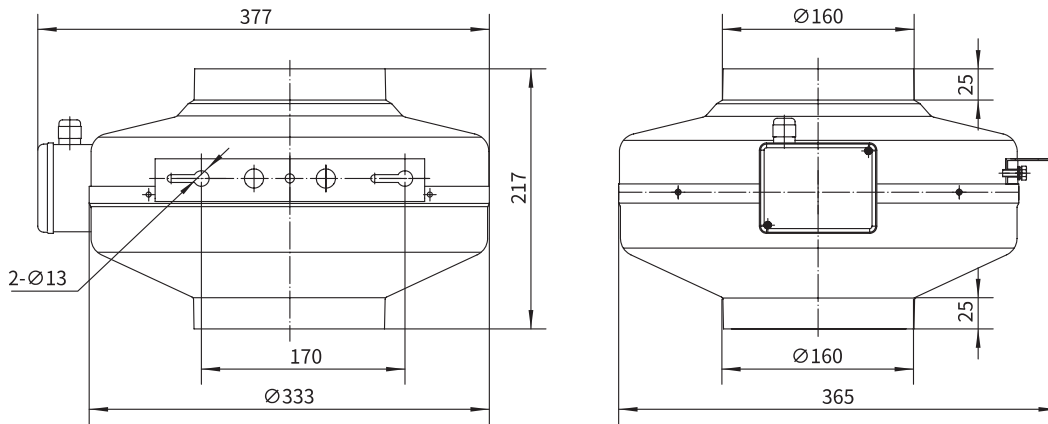
In-line Duct Fan



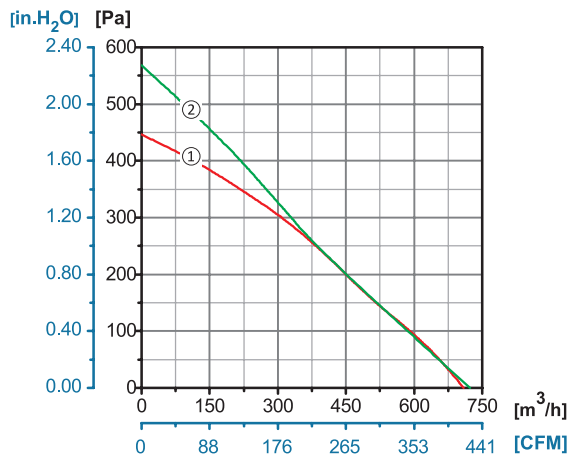
160

Rotor Material: Aluminum Die-casting
Housing Material: Carbon Steel
Ingress Protection: IP44
Insulation Class: F
Bearing Type: Maintenance Free Ball Bearing

Dimensional Drawings



Performance Curves



Model No.	Voltage	Frequency	压	Power	Speed	噪 功	Air Flow (0 Pa)	Noise	Curve	Working Temp.	Approvals
	V		Current			Capacitor					
YWF.G2S-160-217AA0A	110/120	60	1.28	150	2430	12	715/420	73		-30/+60	
	220/230	50	0.52	118	2415	4	710/417	72		-30/+60	CCC, CE
YWF.G2S-160-217AA20	220/230	60	0.70	150	2430	4	715/420	73		-30/+60	CE